

THE PORTOFINO

two bedroom duplex

Square Feet: 1200 sq ft

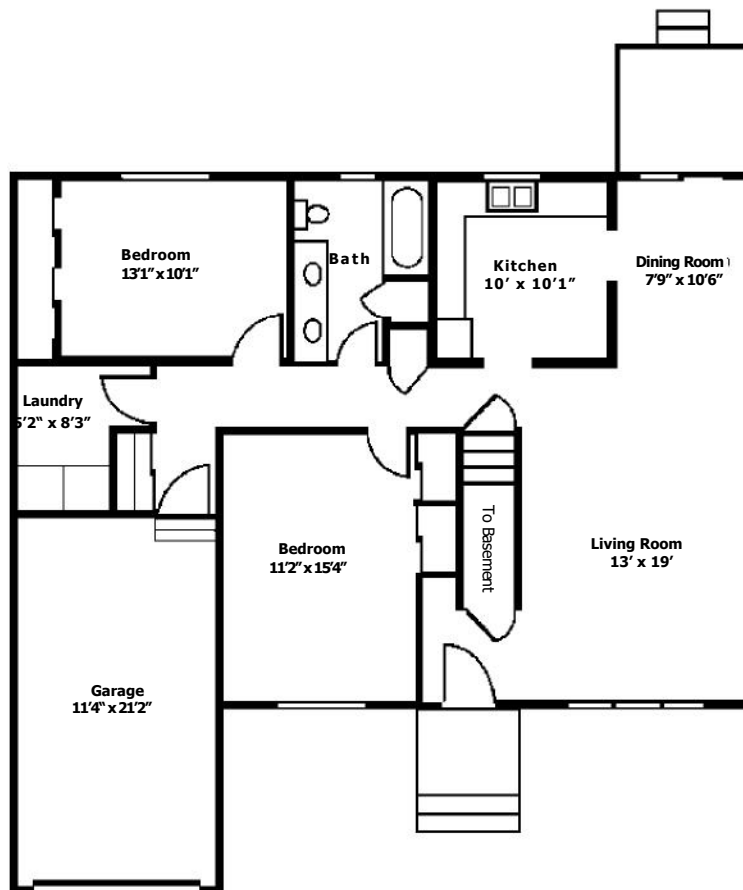
Bedrooms: 2
Bedroom 1: 13'1" x 10'1"
Bedroom 2: 11'2" x 15'4"

Bathrooms: 1 Full, 1 Half

Living Room: 13' x 19'

Includes:

One car attached garage: 11'4" x 21'2" Deck
Full basement



4444 Brendenwood Road • Rockford, IL 61107 • p 815-399-6167 • f 815-399-6169

www.sienanobrendenwood.org

Amenities and Services

Duplex amenities

- ❖ Wall to Wall Carpeting
- ❖ Vertical Cloth Blinds
- ❖ Full Kitchen including:
 - Dishwasher & Microwave
 - Electric Range/Oven
 - Frost Free Refrigerator/Freezer
 - Quartz countertops with backsplash
 - Thermostat controlled heating and air conditioning
 - Telephone wiring
 - Cable television and internet
 - Washer and Dryer in each duplex
 - Fire, Smoke and Safety Alarms
 - Patios or decks
 - Attached garage
 - Private mailboxes

Services included in monthly rent

- ❖ Snow Removal
- ❖ Lawn Care
- ❖ Maintenance and Management Fee
- ❖ 24-hour staffing (security cameras across campus)
- ❖ SARA emergency alert pendants
- ❖ Taxes, Property and Liability Insurance
- ❖ No additional fees for a second person residing in the residence

Community Areas in main building

- ❖ Resident Dining Room open each evening for dinner and brunch on Sunday
- ❖ Cost for dining: \$9.00 per meal for dinner and brunch on Sunday. Saturday Breakfast Buffet \$5.00
- ❖ Private Dining Room available for special occasions
- ❖ Formal Living Room
- ❖ Library/computer room
- ❖ Game Room
- ❖ Billiards Table
- ❖ Multi-purpose Room
- ❖ Creative Arts Center
- ❖ Salon
- ❖ Convenience Store
- ❖ Guest Suite
- ❖ Beautifully landscaped courtyard and grounds

